

Clinical Research Specialty Lead - advertisement

The National Institute for Health and Care Research (NIHR) is funded through the Department of Health and Social Care (DHSC) to improve the health and wealth of the nation through research. The NIHR is a large, multi-faceted and nationally distributed organisation.

Since its establishment in April 2006, the NIHR has transformed research in the NHS. It has increased the volume of applied health research for the benefit of patients and the public, driven faster translation of basic science discoveries into tangible benefits for patients and the economy, and developed and supported the people who conduct and contribute to applied health research.

The Health and Social Care Act 2012 places a statutory duty to promote research, and powers to support it, on the Secretary of State and on all levels of the NHS including the NHS Commissioning Board, and Clinical Commissioning Groups. The NIHR provides a key means through which the Secretary of State discharges this duty. The NIHR plays a key role in the Government's strategy for economic growth, attracting investment by the life-sciences industries through its world-class infrastructure for health research.

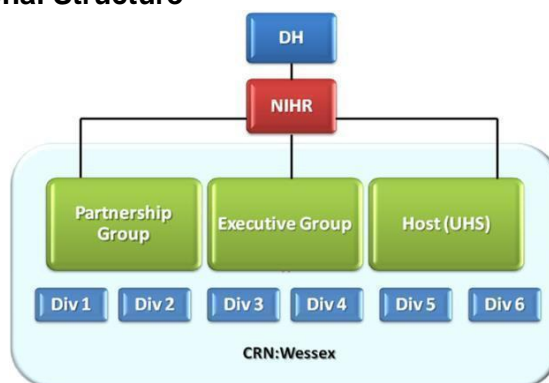
Together, the NIHR people, programmes, centres of excellence, and systems represent the most integrated health research system in the world.

The NIHR Clinical Research Network is the clinical research delivery arm of the NHS in England, tasked with supporting the rapid set-up and effective conduct of studies, so that researchers can gather the robust evidence needed to improve treatments for NHS patients.

The NIHR Clinical Research Network is led by a national coordinating centre, and operates through 15 local clinical research networks (LCRNs) – CRN Wessex being one of the fifteen. These local Networks drive clinical research delivery performance across the locality, and champion the role of clinical research in the NHS at every level.

As part of a national network of NIHR CRN leaders, individual LCRN leaders will drive the clinical research agenda, which is one of national importance. The leadership roles in each LCRN are both high-profile and demanding and leaders will be expected to be ambassadors for the NIHR. As well as a passion for bringing clinical research opportunities to patients, LCRN leaders require an in- depth understanding of how the local NHS “works”, an ability to forge and maintain productive partnerships across organisational boundaries, and the tenacity to deliver stretching targets in challenging environments. As well as being respected across their geographical patch, LCRN leaders will also be key players in an organisation with an international reputation for innovation and achievement in the field of clinical research delivery.

Summary of Organisational Structure



Summary of Specialty Groups

Divisions	Divisional Lead	Research Delivery Manager	Specialty Groups included in the division
Division 1	Mr Zaed Hamady Z.Hamady@soton.ac.uk	Jocelyn Walters j.c.walters@soton.ac.uk	cancer
Division 2	Dr Damian Jenkinson Damian.jenkinson@uhd.nhs.uk	Rebecca Croucher Rebecca.croucher@nihr.ac.uk	diabetes, metabolic and endocrine, stroke, cardiovascular and renal
Division 3	Dr Katrina Cathie k.cathie@soton.ac.uk	Tom Simpson Tom.simpson@nihr.ac.uk	genetics, haematology, paediatrics, reproductive health & childbirth
Division 4	Dr Chris Kipps ckipps@nhs.net	Rebecca Croucher Rebecca.croucher@nihr.ac.uk	DeNDRoN, mental health, neurology
Division 5	Prof Nick Francis Nick.Francis@soton.ac.uk	Martine Cross Martine.cross@nihr.ac.uk	age and ageing, dentistry, dermatology, health services research, musculoskeletal disorders, public health, primary care
Division 6	Dr Dave Pogson david.pogson@porthosp.nhs.uk	Tom Simpson tom.simpson@nihr.ac.uk	anaesthesia peri-operative medicine and pain management, critical care, ENT, gastroenterology, hepatology, infectious diseases and microbiology, injuries and emergencies, ophthalmology, respiratory surgery

Partner Organisations

- Dorset County Hospital NHS Foundation Trust
- Dorset HealthCare University Foundation Trust
- Hampshire Hospitals NHS Foundation Trust
- Isle of Wight NHS Trust
- Portsmouth Hospitals University NHS Trust
- Salisbury NHS Foundation Trust
- South Central Ambulance Service NHS Foundation Trust
- Solent NHS Trust
- Southern Health NHS Foundation Trust
- University Hospitals Dorset NHS Foundation Trust
- University Hospital Southampton NHS Foundation Trust

Application process:

1. Applications are invited for the role of clinical research specialty lead for Genetics.
2. Interviews to be held virtually, date to be confirmed.
3. Please contact the relevant divisional lead/RDM as shown above for further information if required.
4. Information about this vacancy will be disseminated widely across the network and partner organisations.
5. Application process requires applicants to submit a curriculum vitae and supporting statement.
6. Please send your application to tom.simpson@nih.ac.uk by Thursday 10th November.