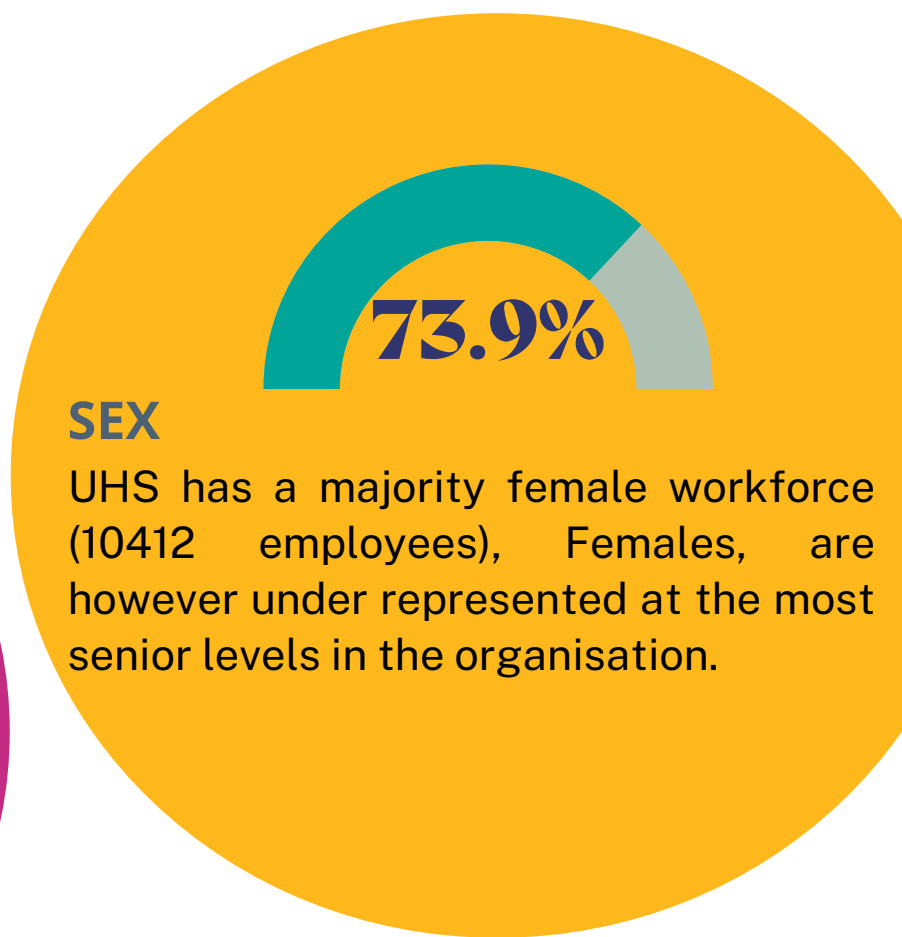
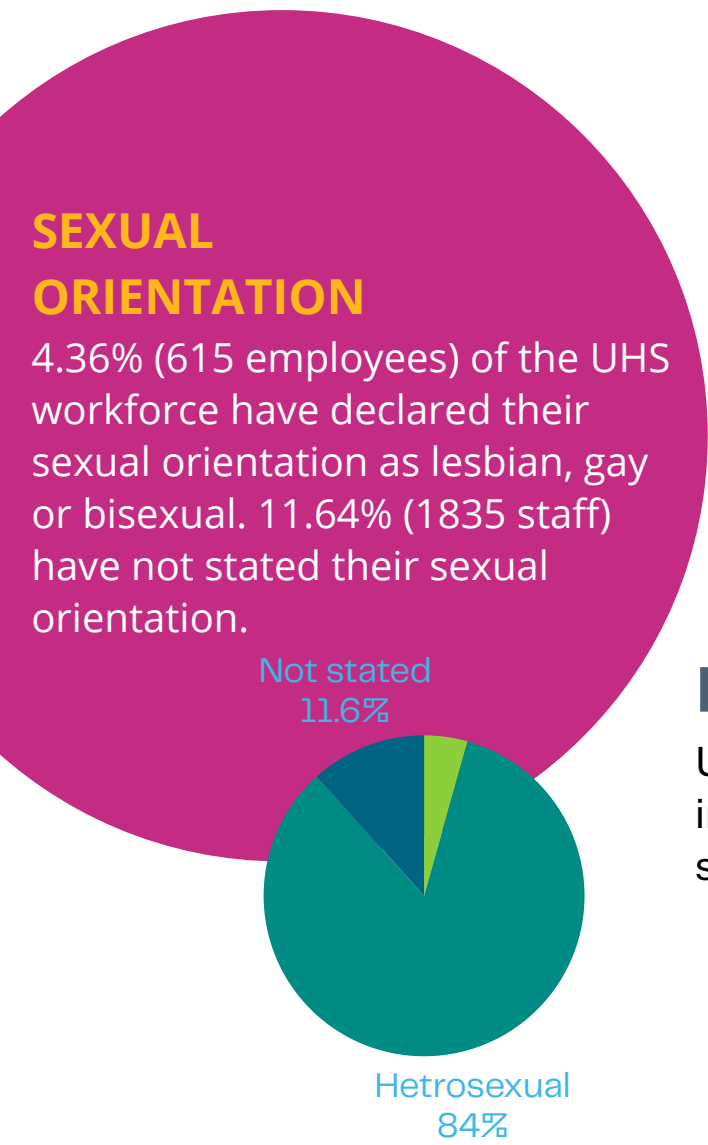


# UHS Workforce Profile as of March 2026

UHS is one of the largest employers in Southampton, with 14093 staff working across a diverse range of healthcare fields as well as non-clinical career pathways. Our profile is as follows:

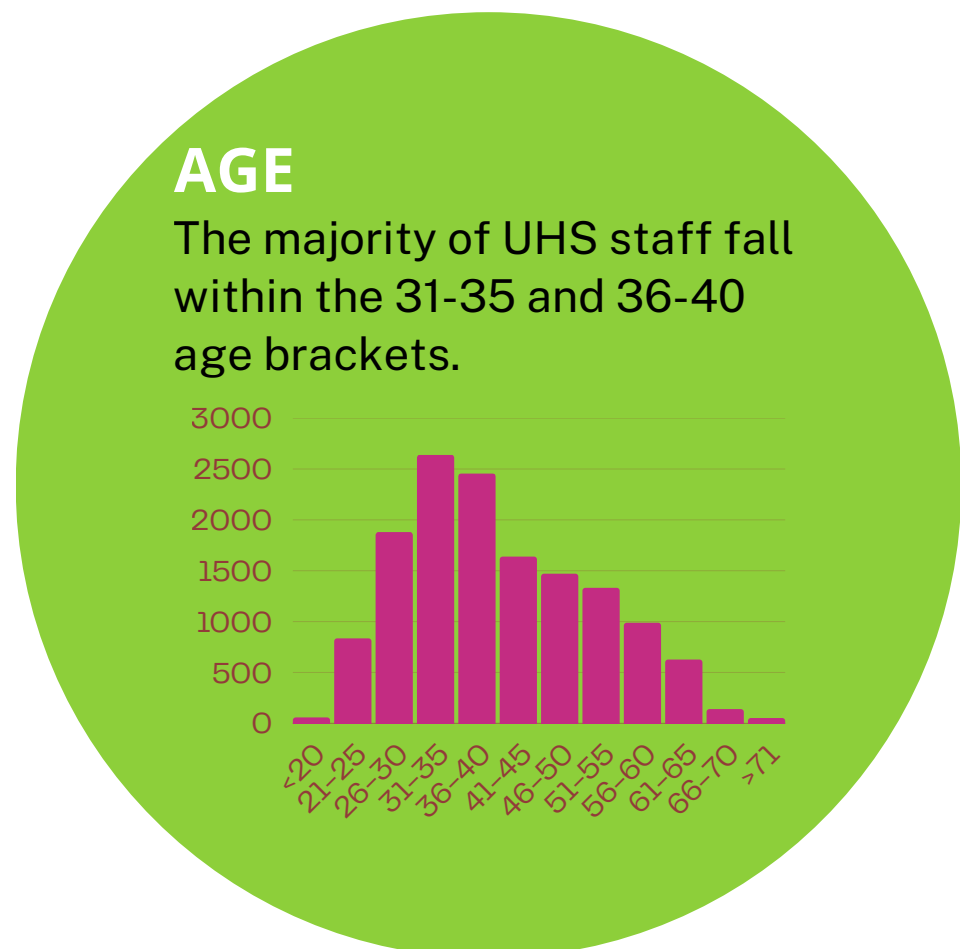


The UHS workforce comprises of 32% of people from Black, Asian and Global majority backgrounds (4556 staff), which is in line with the local population. The largest ethnic groups outside of White are Indian (7%), Filipino (6.56%), Black/Black British - African (5.95%) and Other Asian backgrounds (3.68%).

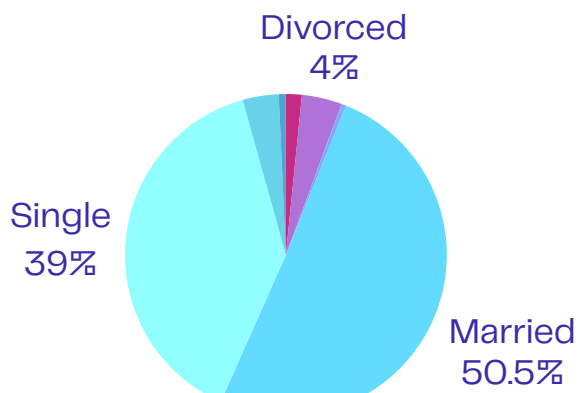


## DISABILITY

UHS has seen a slight increase in declaration of disability since March 2025.



## MARRIAGE & CIVIL PARTNERSHIP



50.5% of UHS staff are married, 39% are single. 1.6% are in civil partnerships, 4% divorced, 0.5% legally separated and 0.7% widowed.

## FAITH AND RELIGION

Christianity is the most declared religion amongst UHS staff.

\*OTHER IS INCLUSIVE OF BUDDHISM, HINDUISM, SIKHISM, JAINISM AND JUDAISM

