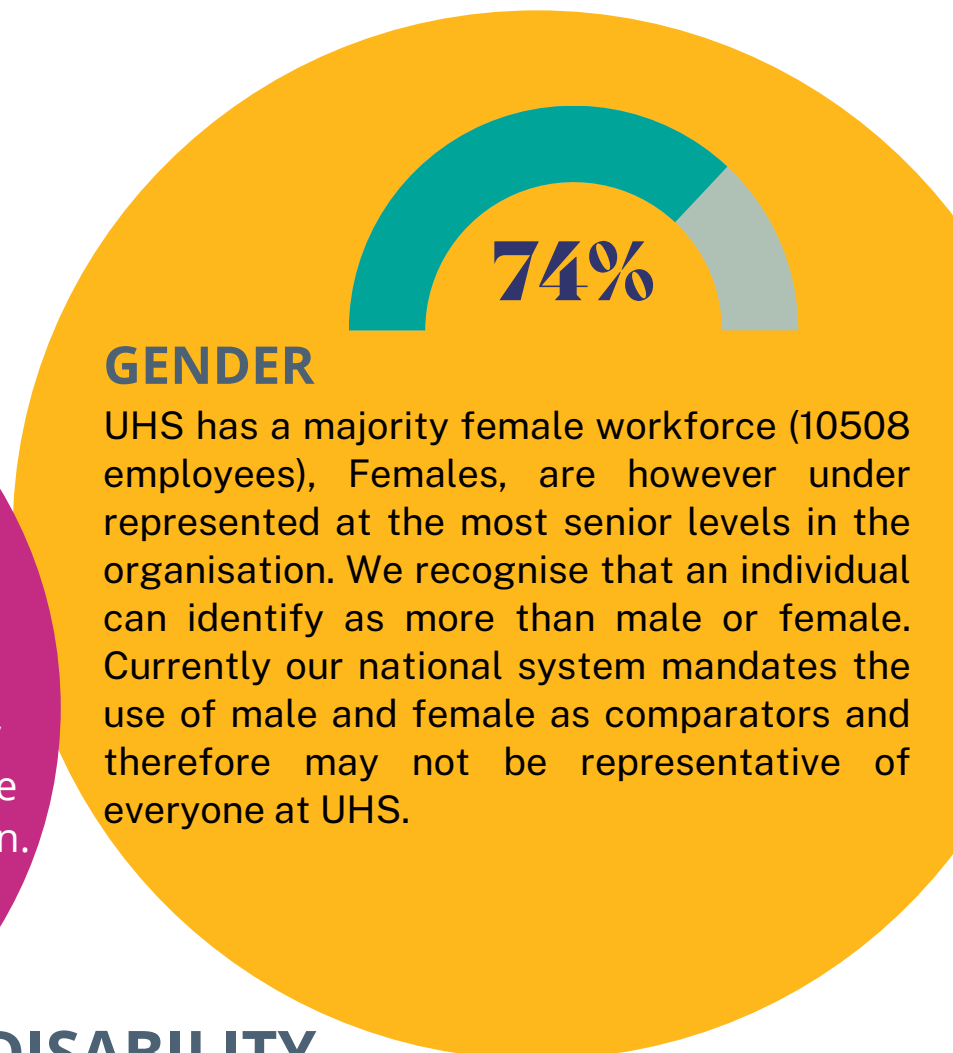
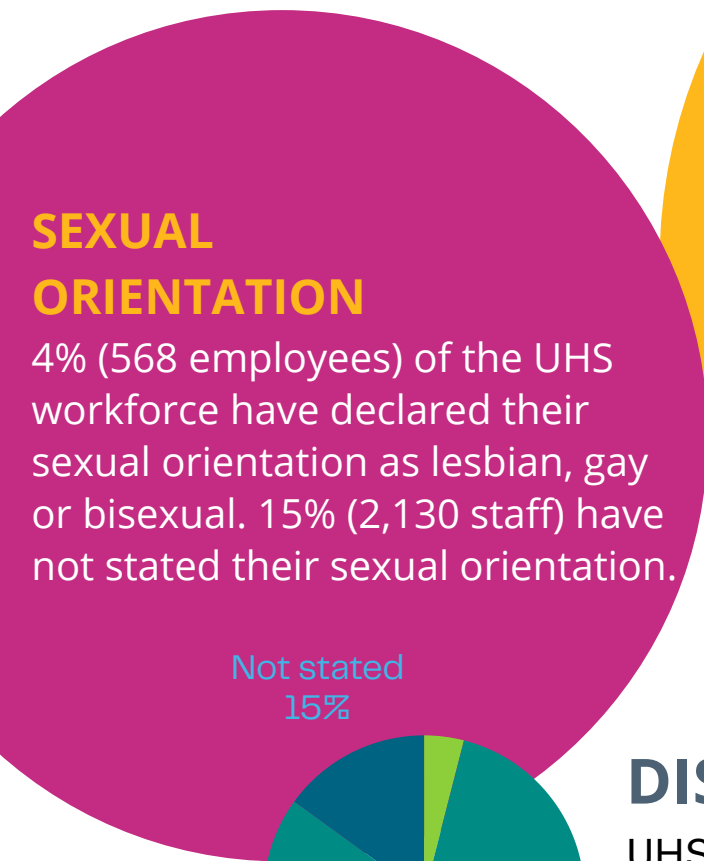


UHS Workforce Profile as of 31st March 2024

UHS is one of the largest employers in Southampton, with 14,200 staff working across a diverse range of healthcare fields as well as non-clinical career pathways. Our profile is as follows:

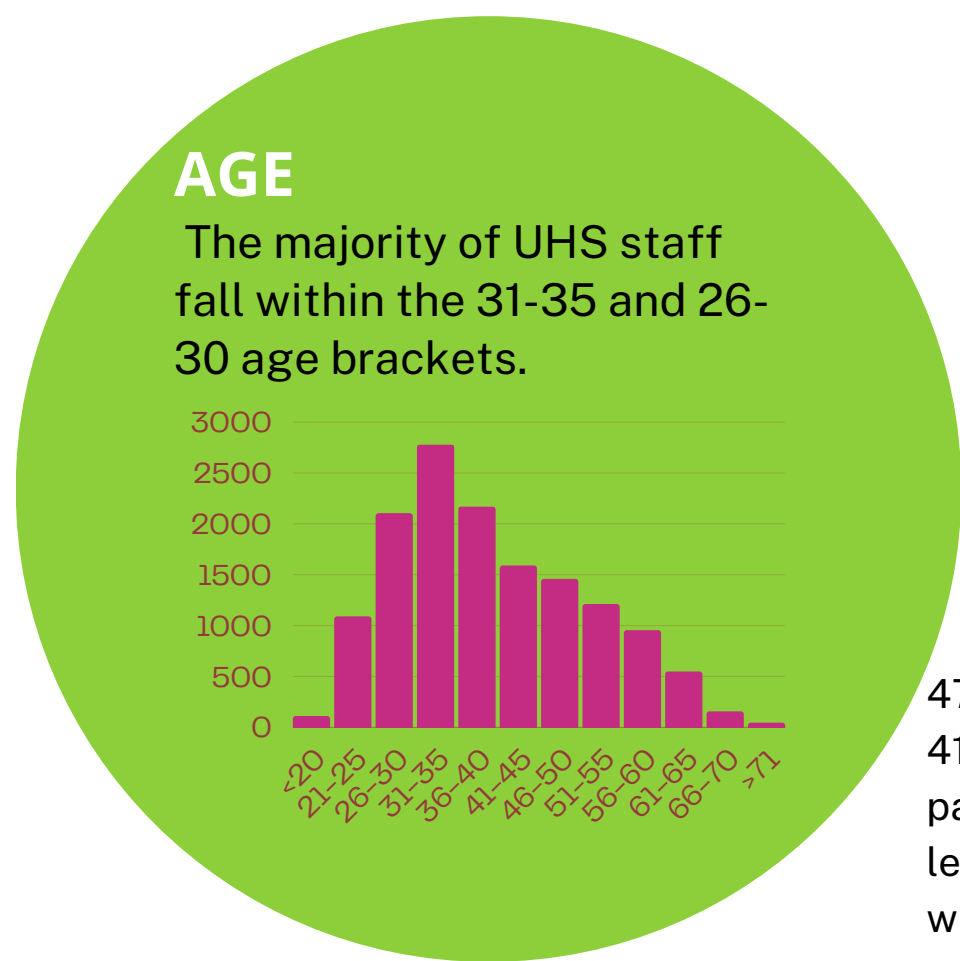
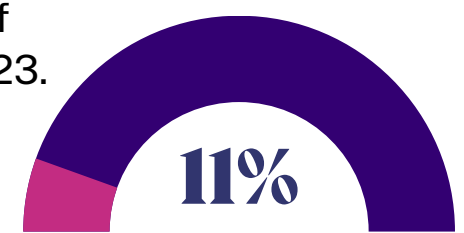


The UHS workforce comprises of 29% of people from Black, Asian and Global majority backgrounds (4118 staff), which is in line with the local population. The largest ethnic groups outside of White are Filipino (6.40%), Indian (6.05%), Other Asian backgrounds (3.55%) and Black/Black British - African (4.82%).

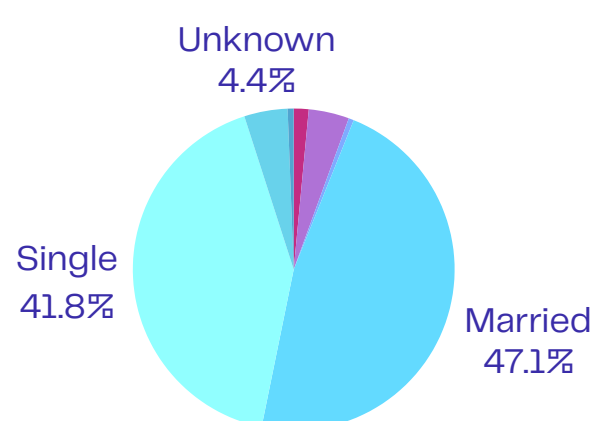


DISABILITY

UHS has seen a steady decrease in declaration of disability since March 2023.



MARRIAGE & CIVIL PARTNERSHIP



47.1% of UHS staff are married, 41.8% are single. 1.5% are in civil partnerships, 4.1% divorced, 0.5% legally separated and 0.6% widowed.

FAITH AND RELIGION

Christianity is the most declared religion amongst UHS staff.

*OTHER IS INCLUSIVE OF BUDDHISM, HINDUISM, SIKHISM, JAINISM AND JUDAISM

