

Welcome to E2 ward



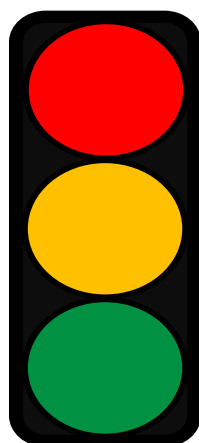
Easy read information
for patients, families and carers





Welcome to ward E2

We are experts in problems affecting the heart.



Our ward is Learning Disability and Autism-friendly.

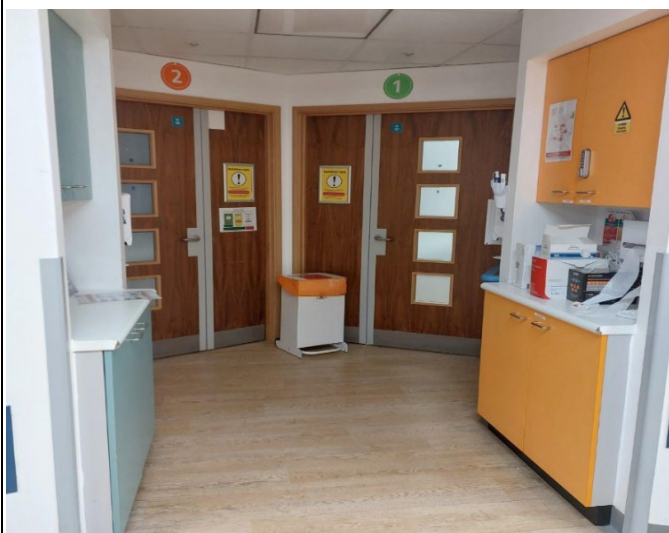
We will do our best to make reasonable adjustments to meet your needs.

The traffic light is the hospital symbol for learning disability.

You may see this symbol on your Hospital passport 'This is me' booklet.



We have 17 beds.



4 side rooms.



We have a kitchen.

Patients, families and carers can use this area to prep meals or make a cup of tea.

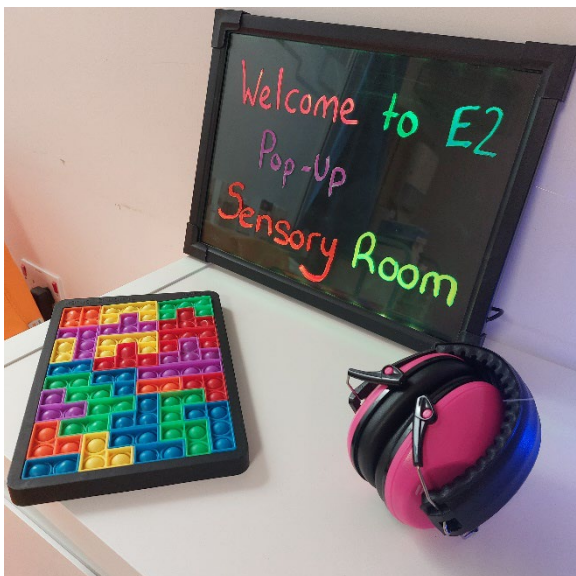


This is our lounge area.

You can use this area to spend time with your friends, families, or carer.



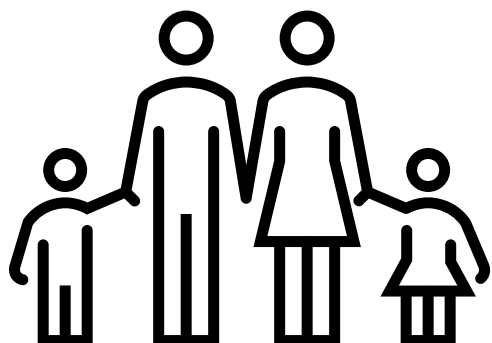
We have a TV with DVD player, Xbox and a CD player for you to use.



We can provide sensory equipment such as:

- ear defenders
- light projector
- coloring
- games
- music

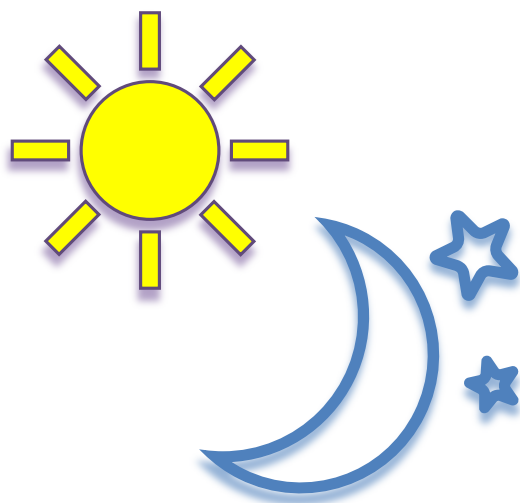
If you have sensory equipment at home that helps you, you can bring it in.



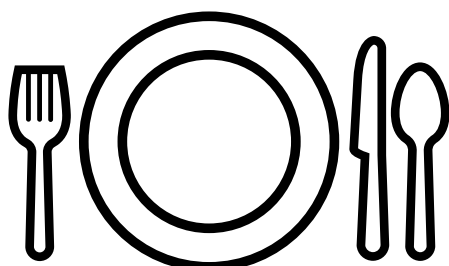
You can have a person stay with you.

This might be:

- a parent
- family member
- carer
- partner



They can stay day and night, if required.



Mealtimes

- Breakfast 8am to 9am

- Lunch 12 noon to 1pm.

Dinner 5pm to 6pm.



We would like you to rest at the times below:



Rest time
From 2pm to 3pm.



We have toiletries and towels on the ward.



You can bring in your own supply if you like.



Ward E2 was funded by the Wessex Heartbeat charity

If your family member, partner or carer requires accommodation, Heartbeat House is available.

Ask any staff nurses and they will be able to help you.



Contact details

E2 ward
University Hospital
Southampton
Tremona Road
Southampton
SO16 6YD



E2 ward
Telephone:
023 8120 6473



Learning Disability
team contact details:

Telephone:
07464923263



Email:
LDA@uhs.nhs.uk

Patient Advice
& Liaison Service
PALS
We're here to help



Our PALS Service,
helps with any
concerns or
complaints.

Email:

pals@uhs.nhs.uk

Telephone:

023 8120 6325

Write to:

Patient advice and
liaison service (PALS),
Mailpoint 81
Southampton General
Hospital,
Tremona Road,
SO16 6YD

Images from www.photosymbols.com

If you are a patient at one of our hospitals and need this document translated, or in another format such as easy read, large print, Braille or audio, please telephone **0800 484 0135** or email patientsupporthub@uhs.nhs.uk

For help preparing for your visit, arranging an interpreter or accessing the hospital, please visit www.uhs.nhs.uk/additionalsupport